



CATALOG OF ANALYTICAL SERVICES

GETTING STARTED WITH MIDWEST LABORATORIES

Choosing where to go for your organization's testing services is essential to ensuring the success of your organization. You want a testing facility where you'll find the specialized expertise you need, along with advanced technology to guarantee the accuracy of your results. We are happy to be your analytical laboratory of choice. Get started by registering on the myLab Portal, review our available analyses and call our client services team with any additional questions. Create sample submission paperwork on myLab portal

STEP 1. PICK YOUR ANALYSIS PACKAGE

Select from one of the many comprehensive analysis packages we've prepared for every industry we serve. You can also browse our full analysis offerings in our Catalog. It is broken out by the industries that we serve. All analyses will be invoiced after 30 days.



NOT SEEING AN ANALYSIS YOU NEED?

Submit a Method Development Request form and our team will research adding it to our services: midwestlabs.com/new-method-development-request

STEP 2. COMPLETE YOUR SUBMITTAL FORM

Sending in proper submittal paperwork with your samples is required at Midwest Labs. Proper paperwork serves as a packing slip to include in the box with your samples and ensures that testing are completed as accurately and efficiently as possible.



Submittal forms can be auto-created through our myLab Portal site, or printed from midwestlabs.com/resources/submittal-forms resources section and manually filled out.

STEP 3. HOW TO MAIL YOUR SAMPLES

Once your samples are prepared, labeled, and boxed up with your submittal form, please ship them to:

Midwest Laboratories

13611 B Street, Omaha, NE 68144

We also accept samples Monday through Friday from 8 am to 4 pm with local drop off and a drop box at our main entrance for after hours.



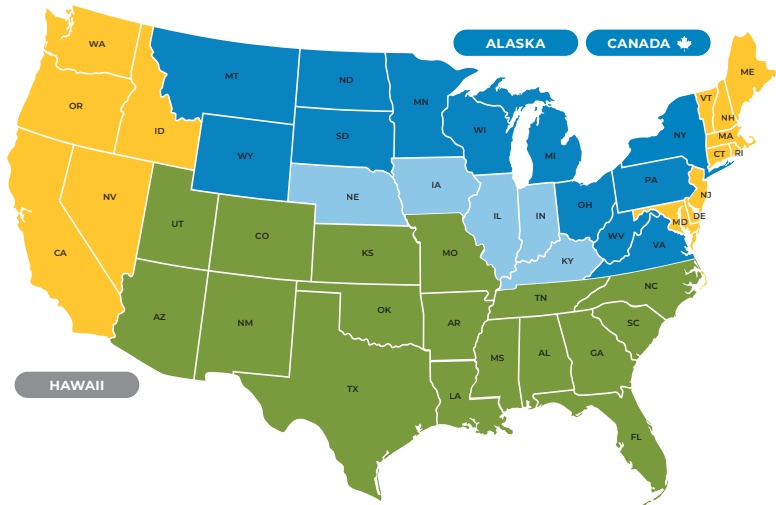
When using a Midwest Labs box, please utilize the space on top to mark each box. **Submittal forms are required with your samples.** If you are shipping multiple boxes, a submittal form must be included in every box.



SPECIALTY SERVICE OFFERINGS

AGRONOMIC RECOMMENDATIONS & TRAININGS

Midwest Laboratories offers agronomic consulting and training by our team of Field Agronomists. Located in three states and traveling North America our field representatives are available for on site trainings, seminars, personalized client meetings, and in season planning. Contact your representative below for in-depth agronomic consultation.



West Coast & North East Region

Ashley Babl

Field Representative

(Specialty Crops / Agriculture)

(402) 804-0413

ABabl@midwestlabs.com

Southern Region

Jim Grilliot

Field Representative

(Agriculture)

(402) 699-2613

JGrilliot@midwestlabs.com

Northern Region, Canada & International Accounts

Jim Fasching

Field Representative (Agriculture)

(507) 273-3339

JFasching@midwestlabs.com

Eastern Midwest Region

Tim Radmacher

Field Representative

(Nutrient Management/Agriculture)

(531) 222-6972

TRadmacher@midwestlabs.com

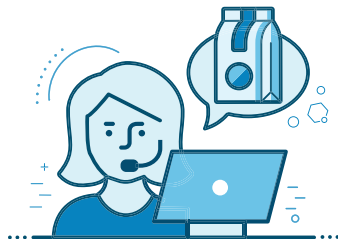
For a formal sales quote or customized analysis package,
please contact your account manager.

ACCESSIBLE & RESPONSIVE CLIENT SERVICE TEAM

Our client service staff is always on hand to assist you with questions during our standard business office hours. If you are unable to call, you have the option to text your inquiry to our client service staff. Responses will be sent back to your mobile device.

CALL US: 402. 334. 7770

TEXT US: 402. 313. 4050



Questions can also be submitted through our website at

MIDWESTLABS.COM/CONTACT-US

Our main office is located at **13611 B STREET, OMAHA, NE 68144.**

Standard business office hours: Monday – Friday, 8:00am – 5:00pm CST

Standard sample receiving hours: Monday – Friday, 8:00am – 5:00pm CST

Saturday receiving hours: 8:00am – 12:00pm CST via USPS, UPS, FedEx, and Speedee

Our Offices and Laboratories are closed in observation of the following US holidays:

New Year's Day, Memorial Day, Independence Day, Labor Day, Thanksgiving Day, Christmas Day.

CUSTOMIZED CLIENT ONBOARDING & FREE ONLINE RESOURCES

Our Client Onboarding Specialist is available to help you get started and submit your samples. We offer training on the MyLab Portal, sampling supplies, custom analysis packages, or user settings and overall account set up. Ultimately, we work to create a seamless onboarding experience for all of our partners.

We also have an online resource library available at **MIDWESTLABS.COM**, allowing you to research topics at your leisure. The library includes white papers, MyLab Portal training guides, agronomic recommendations, and industry specific reference guides along with helpful FAQ documents that cover common questions.

API INTEGRATION

Customized API integration is available for our REST API systems. For access to our API system and test platform please contact your account manager.

ENVIRONMENTAL FIELD SAMPLING

Midwest Labs offers environmental field sampling for wastewater treatment plants, city municipalities, manufacturing facilities and more. Please contact our environmental account management team with your permit and required sampling plan for a formal project quote. Sampling supplies, travel, and service fee is separate from the cost of analysis.



GENERAL SUBMISSION PROCESS

DISCOUNTED SHIPPING LABELS & SAMPLING SUPPLIES

All samples are to be received by Midwest Laboratories during normal business hours. Samples will be received via Walk In, USPS, UPS, FedEx, and Speedee delivery services. Samples must be received with a completed sample submittal form to be accepted for analysis. Please contact your account manager with questions regarding delivery times.



Midwest Labs accepts shipment from all major couriers. Discounted shipping options are available to Midwest Labs clients for UPS, Speedee Delivery, and FedEx. Please ship your samples directly to: **MIDWEST LABORATORIES, 13611 B STREET OMAHA, NE 68144.**

Sampling supplies are available to order through your myLab Portal account or by contacting your account manager. Supplies can be shipped directly to you or picked up at our shipping warehouse located at **13505 C STREET OMAHA, NE 68144** during the following business hours: Monday – Friday, 7:00am – 4:00pm CST.

REGULATORY OR HOLD TIME SENSITIVE SAMPLES

Samples that are subject to a regulatory 'hold time' must be delivered by 4:00PM, Monday-Friday. **If your sample is submitted in a sterile bottle for water testing please be advised hold times may apply.** Samples may be rejected or require resampling if not received within the required time frame for analysis. Contact your account manager or refer to the sample submission instructions included with your supplies to learn if hold times apply to your sample.

TURNAROUND TIME

Turnaround time will vary depending upon the analysis requested, the matrix of the sample, and other additional factors. We are committed to processing each sample as soon as possible. Additional turnaround time details can be found throughout the fee schedule. For questions on turnaround time or expected results please contact your account manager. A partial or verbal report may be available upon request.

REPORTED RESULTS

Midwest Laboratories offers access to your reports via email, mail, or through our online myLab Portal. Account holders can create a myLab user profile to access their results, print sample submission paperwork, and view billing statements or invoices through one convenient dashboard and online profile. All reports will be emailed unless paper copies are requested at time of account set up.

INVOICING

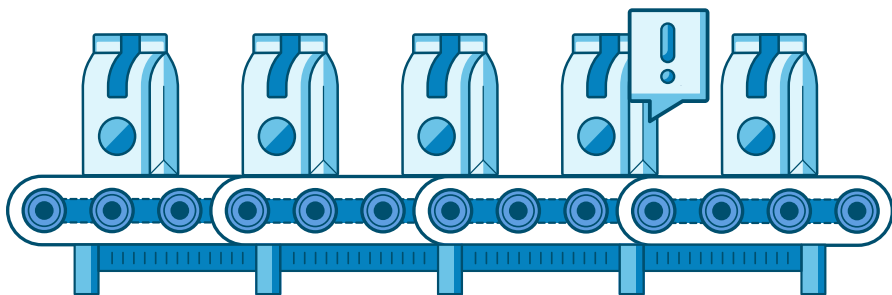
You will be invoiced at the beginning of each month for any work completed in the month prior. Once you receive your invoice, you may pay through the myLab Portal with a credit card, send in a check, or call in payment. All analysis is subject to NET30 Payment terms unless an RFP or formal agreement has been signed and documented with agreed upon payment terms. A valid account number and invoicing email address or physical mailing address will be required at time of sample submission.



RUSH & OUTSOURCING PROGRAMS

The Rush Program is a fee-based premium service reserved for customers who need accelerated turnaround time for a sample or requested analysis. Rush requests must be submitted to our Rush Coordinator for an estimated cost and an estimated turnaround time. A price quote will be provided and a signed acknowledgment must be returned to begin rush analysis. We will respond to all rush requests on the same day as received, Monday-Friday (8:00am-4:30pm CST). Rush requests received outside of these hours will be addressed immediately on the following business day. A rush fee will be applied to all rush orders and not all analysis are available for the Rush Program. Please contact our Rush Coordinator for more information at RUSH_COORDINATOR@MIDWESTLABS.COM.

Don't see the analysis you need? Reach out to your Account Manager and ask about our Outsource Program. Midwest Laboratories may be able to forward your sample along to a trusted, 3rd party lab on behalf of us. We take care of the shipping, handling and reporting.



LABOR & CONSULTING FEES

Midwest Laboratories reserves the right to charge a fee for labor and consulting. This may include clerical, corporate office, technical consulting, chemist assistance, sample prep, or IT integrations and API services. Please contact your account manager for specialized project requests and a project quote.

ADDITIONAL FEES INCLUDE:

ADDITIONAL SAMPLE PREPARATION

An additional sample prep fee may be added to the cost of analysis if the sample is a large volume, requires compositing, preservations are required or the sample is a complex matrix that requires validation.

RE-RUN POLICY

Clients questioning the results of their analysis may request a re-run or re-test of the sample. If the re-run confirms the original result, within method uncertainty or variability, Midwest Labs reserves the right to charge for the rerun analysis. Expected levels or acceptable range may be requested prior to rerunning the analysis.

MANUAL REPORTING

Midwest Laboratories offers a universal REST API upon request. To receive API information, please contact your Account Manager. Requests for data, submissions, and transfers must be coordinated with IT management and approved by the Midwest Laboratories Management Team. API integration projects will be assessed a fee based upon programming time and complexity of the project.

METALS PREP FEE

The Laboratory will select the method deemed to be most appropriate unless the client or a regulatory body specifies a method. Each sample must be prepared by an appropriate method of digestion, filtration or extraction.

QUALITY CONTROL

Midwest Laboratories follows rigorous Quality Control specifications set forth by the reference methods we perform and by our Accreditation Bodies.

Midwest Laboratories carries extensive NELAC and ISO 17025 accreditations as demonstrated by our commitment to quality. Midwest Laboratories has met stringent quality requirements for precision and accuracy. The scope of our accreditations can be obtained through our website. ISO 17025 and NELAC accreditation can be requested by calling the QA Director or your Account Manager.

If requested, a QA/QC report can be issued to support analytical data. Quality Control paperwork may be charged depending upon the time involved. Please contact QA Director at 402-334-7770 for additional information.



BBB RATING & ACCREDITATION

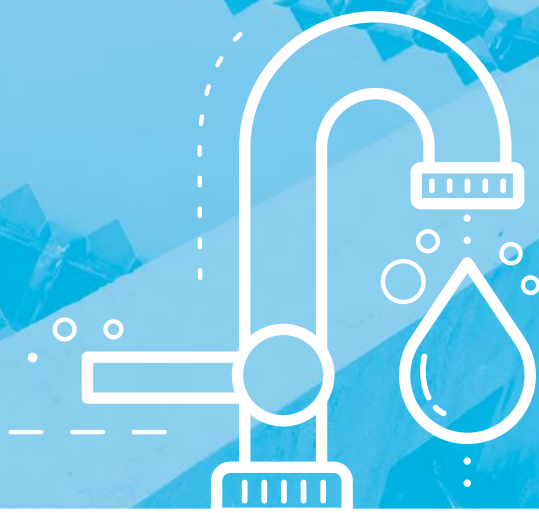
IN-HOUSE QUALITY CONTROL PERSONNEL

- Quality Assurance Director
- Director of Customer Success
- Quality Control Analysts

WE PARTICIPATE IN THE FOLLOWING PROFICIENCY TESTING PROGRAMS:

- Phenova (drinking water, wastewater, hazardous waste)
- AAFCO (animal feed, pet food ingredients, mycotoxins)
- AOAC (microbiology)
- FAPAS (various food analyses)
- AACC (Vitamins, Minerals, Proximates; dietary fiber; sugar profile)
- ALP (soil analysis)
- NAFT (soil and plant analysis)
- CAPP (compost analysis)
- Magruder (fertilizer analysis)
- MAP (manure analysis)
- USDA (GMO)
- Wisconsin Proficiency Test Program
- ALTA (Soils)
- Iowa DALS (Soils)

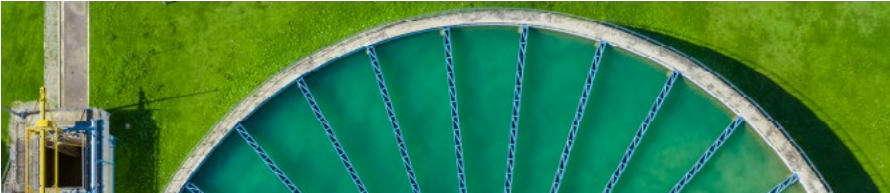
This image shows a single sheet of white paper with horizontal ruling lines. The lines are evenly spaced and run across the width of the page. There are no margins, text, or other markings on the paper.



... ..

ENVIRONMENTAL

ENVIRONMENTAL INTRODUCTION



Our environmental testing services include a wide range of analysis options whether for regulatory reporting or research. We offer testing for wastewater, hazardous waste, drinking water, animal feed operations and more. Midwest Labs also offers Environmental Sampling services for wells, groundwater, and manufacturing facilities in the Midwest.

POPULAR ANALYSIS WE OFFER:

- Storm Water
- Underground Storage Tanks
- Groundwater Monitoring
- Wastewater
- Biosolids
- Hazardous Waste
- Drinking Water

Please reference the following section for a list of available analytical services. Services are listed by name, along with their required sample size, turnaround time, and price. Here is an example of how our analyses are listed:

★ ANALYTICAL PACKAGE *	Required Sample Size	Turnaround Time	PRICE
Description of test package and included analyses.			

Below the analytical package name will be a description of test package and a list of all included analyses. Our most popular and commonly used packages will be noted with a star icon (★). Some analyses may also be marked with an asterisk (*) or other symbols, letting you know to reference the additional notes in the footer of the page.

SAMPLING CHARGES

Midwest Laboratories has a trained and experienced field crew capable of sampling time and flow proportioned composites, monitoring wells, and frozen meat or other foods. Labor will be invoiced per man-hour, travel time included. Additional charges may be assessed for hazardous work, confined space entry, or excessively long workdays. Vehicle mileage is charged per mile and equipment charges may apply.

Drive Time	\$55.00/HR
Non-hazardous or non-confined spaces per employee	\$75.00/HR
Hazardous or confined spaces per employee	\$90.00/HR

EQUIPMENT

Sampling and monitoring equipment is available for use on sampling projects by Midwest technicians. Use of equipment other than by Midwest staff will be at the discretion of the laboratory and requires a deposit. Midwest assumes no liability for the use of this equipment by persons other than Midwest employees.



ENVIRONMENTAL DRINKING WATER

	Required Sample Size	Turnaround Time	Price
★ W3 WATER QUALITY*	(2) 250mL & 125mL sterile	5 - 7 BD	\$70.00

Total Coliform, Total Hardness, Manganese, E.coli, Conductivity, Sulfate, Sodium, Iron, Chloride, Calcium, Total Dissolved Solids (by calculation), Fluoride, Magnesium, pH, Nitrate Nitrogen

★ W3A	(2) 250mL	5 - 7 BD	\$62.00
--------------	-----------	----------	----------------

Total Hardness, Manganese, Conductivity, Sulfate, Sodium, Iron, Chloride, Calcium, Total Dissolved Solids (by calculation), Fluoride, Magnesium, pH, Nitrate Nitrogen

W4*	250mL & 125mL sterile	3 - 5 BD	\$35.00
------------	--------------------------	----------	----------------

Nitrate-Nitrite Nitrogen (EPA 353.2), Total Coliform, E. coli,

W5: FHA LOAN*	(2) 125mL sterile (1) 250mL plastic (1) 1L plastic	5 - 7 BD	\$95.00
----------------------	--	----------	----------------

Total Coliform, Nitrate Nitrogen, Lead, Fecal Coliform, Nitrite Nitrogen, E. coli

EPA 524.2 - VOLATILE ORGANICS (REGULATED & NON-REGULATED)	(4) 40 mL vials	5 - 7 BD	\$125.00
--	-----------------	----------	-----------------

1,1,1,2-Tetrachloroethane	1,2-Dichloroethane	Bromodichloromethane	Dichlorodifluoromethane	Styrene
1,1,1-Trichloroethane	1,2-Dichloropropane	Bromoform	Ethylbenzene	Total Trihalomethanes
1,1,2,2-Tetrachloroethane	1,3,5-Trimethylbenzene	Bromomethane	Hexachlorobutadiene	tert-Butylbenzene
1,1,2-Trichloroethane	1,3-Dichlorobenzene	Carbon Tetrachloride	Isopropylbenzene	Tetrachloroethene
1,1-Dichloroethane	1,3-Dichloropropane	Chlorobenzene	m,p-Xylenes	Toluene
1,1-Dichloroethene	1,4-Dichlorobenzene	Chloroethane	Methylene Chloride	Total Xylenes
1,1-Dichloropropene	2,2-Dichloropropane	Chloroform	Naphthalene	trans-1,2-Dichloroethene
1,2,3-Trichlorobenzene	2-Chlorotoluene	Chloromethane	n-Butyl Benzene	trans-1,3-Dichloropropene
1,2,3-Trichloropropene	4-Chlorotoluene	cis-1,2-Dichloroethene	n-Propyl Benzene	Trichloroethene
1,2,4-Trichlorobenzene	Benzene	cis-1,3-Dichloropropene	o-Xylene	Trichlorofluoromethane
1,2,4-Trimethylbenzene	Bromobenzene	Dibromochloromethane	p-Isopropyltoluene	Vinyl chloride
1,2-Dichlorobenzene	Bromochloromethane	Dibromomethane	sec-Butylbenzene	

1, 4-DIOXANE	(4) 40 mL vials	5 - 7 BD	\$120.00
---------------------	-----------------	----------	-----------------

* Samples must be received at the laboratory within 24 hours of sampling.

† Samples must be received at the laboratory within 48 hours of sampling.

	Required Sample Size	Turnaround Time	Price
REGULATED INORGANIC CHEMICALS (IOC) †	1L	5 - 7 BD	\$190.00

Antimony, Copper, Nitrate Nitrogen, Arsenic, Fluoride, Selenium, Barium, Lead, Sodium, Beryllium, Mercury, Sulfate, Cadmium, Nickel, Thallium, Chromium, Nitrite Nitrogen

INDIVIDUAL ANALYSIS

Arsenic	500mL	5 - 7 BD	\$40.00
Fluoride	125mL plastic	5 - 7 BD	\$20.00
Aerobic Plate Count (HPC)*	125mL sterile	5 - 7 BD	\$20.00
Lead	1L	5 - 7 BD	\$40.00
Lead & Copper	1L	5 - 7 BD	\$50.00
Nitrate Nitrogen †	250mL	5 - 7 BD	\$20.00
Nitrite Nitrogen + pH package †	250mL	5 - 7 BD	\$32.50
Trihalomethanes (THMs)	(4) 40mL Vials	5 - 7 BD	\$125.00
Total Coliform (Quanti-tray 18 hour)*	125mL sterile	24 HR	\$20.00

PLEASE CALL IN ADVANCE FOR SAMPLING CONTAINERS

* Samples must be received at the laboratory within 24 hours of sampling.
† Samples must be received at the laboratory within 48 hours of sampling.



ENVIRONMENTAL INORGANIC ENVIRONMENTAL

	Required Sample Size	Turnaround Time	Price
LANGELIER SATURATION INDEX PACKAGE	250mL	5 - 7 BD	\$65.00
Includes calcium, conductivity, pH & alkalinity			
RYZNAR STABILITY INDEX PACKAGE	250mL	5 - 7 BD	\$65.00
Includes calcium, conductivity, pH & alkalinity			
INDIVIDUAL ANALYTES			
Acidity	250mL	5 - 7 BD	\$25.00
Alkalinity	250mL	5 - 7 BD	\$20.50
Ash (Percent)	50g	5 - 7 BD	\$20.00
Biochemical Oxygen Demand (BOD) 5-day †	1L	5 - 7 BD	\$45.00
Biochemical Oxygen Demand (BOD) Saturday † Δ	1L	5 - 7 BD	\$90.00
Carbonaceous Biochemical Oxygen Demand (CBOD) 5-day †	1L	5 - 7 BD	\$45.00
Carbonaceous Biochemical Oxygen Demand (CBOD) Saturday † Δ	1L	5 - 7 BD	\$90.00
Soluble Biochemical Oxygen Demand (SBOD)	1L	5 - 7 BD	\$50.00
Soluble Carbonaceous Biochemical Oxygen Demand (SCBOD)	1L	5 - 7 BD	\$50.00
Chemical Oxygen Demand	250mL	5 - 7 BD	\$35.00
Chemical Oxygen Demand (Soluble)	250mL	5 - 7 BD	\$40.00
Chloride (by IC)	125mL	5 - 7 BD	\$20.00
Chloride (colorimetric)	125mL	5 - 7 BD	\$20.00
Chlorine, Residual (in Lab) *	500mL	2 - 3 BD	\$22.00
Chlorophyll a (field filtered)	1L	5 - 7 BD	\$45.00
Color	125mL	5 - 7 BD	\$25.00
Conductance (EC)	125mL	5 - 7 BD	\$15.00
Cyanide, Total (Liquid)	250mL	5 - 7 BD	\$40.00
Cyanide, Total (Solid)	25g	5 - 7 BD	\$55.00
Cyanide, Total and Amenable	250mL	5 - 7 BD	\$80.00
Dissolved Gases (in Water) (Methane, Ethane, Ethylene)	125mL	5 - 7 BD	\$115.00

* Samples must be received at the laboratory within 24 hours of sampling.

† Samples must be received at the laboratory within 48 hours of sampling.

Δ Saturday deliveries must be scheduled with the laboratory before sending.

	Required Sample Size	Turnaround Time	Price
Dissolved Oxygen (in Lab)	125mL	2 – 3 BD	\$12.00
Dissolved Orthophosphate (colorimetric) †	125mL	5 – 7 BD	\$21.50
Elutriate Processing	Call for sample size	--	\$170.00
Extractable Organic Halides (EOX)	25g	5 – 7 BD	\$100.00
Fluoride (by IC)	125mL	5 – 7 BD	\$20.00
Free CO2	125mL	5 – 7 BD	\$50.00
Hardness (by ICP) (Mg & Ca)	125mL	5 – 7 BD	\$50.00
Hexane Extractable Materials (HEM) (liquid)	(2) 1L glass jars	5 – 7 BD	\$75.00
Hexane Extractable Materials (HEM) (solid)	100g	5 – 7 BD	\$100.00
Hexavalent Chromium (liquid) †	250mL	5 – 7 BD	\$45.00
Microcystin	125mL sterile	5 – 7 BD	\$45.00
Monochloramine *	250mL	5 – 7 BD	\$20.00
Nitrogen, Ammoniacal (soil/sediment)	100g	5 – 7 BD	\$27.00
Nitrogen, Ammoniacal (liquid, distillation)	250mL	5 – 7 BD	\$21.50
Nitrogen, Ammoniacal (discrete analyzer) (SM4500 NH3G)	250mL	5 – 7 BD	\$18.00
Nitrogen, Nitrate (ion chromatography EPA 300.0) †	250mL	5 – 7 BD	\$20.00
Nitrogen, Nitrate/Nitrite (Cadmium Reduction) (EPA 353.2)	125mL	5 – 7 BD	\$15.00
Nitrogen, Nitrite + pH †	250mL	5 – 7 BD	\$32.50
Nitrogen, Total Kjeldahl (TKN)	250mL	5 – 7 BD	\$27.50
Paint Filter		3 – 5 BD	\$25.00
pH	125mL	3 – 5 BD	\$10.00
pH Adjustment (Type and volume of acid required to adjust pH to a designated pH)	250mL	3 – 5 BD	\$40.00
Total Phosphorus (colorimetric)	250mL	5 – 7 BD	\$27.00
Phenolics (liquid)	250mL	5 – 7 BD	\$45.00
Phenolics (solid)	100mL	5 – 7 BD	\$60.00
Redox Potential	125mL	3 – 5 BD	\$30.00
Solids, Settleable	1L	5 – 7 BD	\$20.00
Solids, Total	250mL	5 – 7 BD	\$20.00
Solids, Total Dissolved	250mL	5 – 7 BD	\$25.00
Solids, Total Suspended	250mL	5 – 7 BD	\$20.00

* Samples must be received at the laboratory within 24 hours of sampling.

† Samples must be received at the laboratory within 48 hours of sampling.

	Required Sample Size	Turnaround Time	Price
Solids, Total Volatile	250mL	5 - 7 BD	\$20.00
Solids, Total Volatile Suspended	250mL	5 - 7 BD	\$25.00
Specific Gravity (gravimetric)	100g	5 - 7 BD	\$20.00
SOUR (Specific Oxygen Uptake Rate)	100g	8 - 10 BD	\$65.00
Sulfate (by IC)	125mL	5 - 7 BD	\$20.00
Sulfide (liquid)	500mL	5 - 7 BD	\$40.00
Sulfide (solid)	100g	5 - 7 BD	\$60.00
Total Halogens	10g	5 - 7 BD	\$110.00
Total Organic Carbon (liquid)	250mL	5 - 7 BD	\$35.00
Total Organic Carbon (solids)	5g	5 - 7 BD	\$25.00
Total Organic Nitrogen (Kjeldahl Nitrogen minus Ammoniacal Nitrogen)	250mL	5 - 7 BD	\$42.50
Total Organic Halides (liquid)	1L	5 - 7 BD	\$95.00
Turbidity	250mL	5 - 7 BD	\$15.00
Volatile Organic Acids	500mL	5 - 7 BD	\$40.00



ENVIRONMENTAL INORGANIC METALS

Most elements are analyzed by Inductively Coupled Plasma Optical Emission Spectroscopy (ICP-OES).

Some of these elements, notably Arsenic and Selenium, are routinely analyzed by Inductively Coupled Plasma Mass Spectroscopy (ICP-MS) for enhanced sensitivity. Mercury is analyzed by Cold Vapor Atomic Absorption (CVAA) or ICP-MS.

SAMPLE PREPARATION FEES (PER SAMPLE)

The Laboratory will select the method deemed to be most appropriate unless the client or a regulatory body specifies a method. Each sample must be prepared by an appropriate method of digestion, filtration or extraction. Charges are shown below.

Acid Digestion - applied to all ICP-MS and ICP-OES analysis	\$20.00
Filtration (0.45 Micron)	\$17.00
Fusion	\$40.00
Extractions	\$20.00

FORMULATION LEVEL ASSAY

Boron, Calcium, Copper, Iron, Manganese, Magnesium, Sodium, Phosphorus, Potassium, Sulfur, Zinc (includes sample prep)

Single element from above	100g	5 - 7 BD	\$30.00
---------------------------	------	----------	----------------

		Required Sample Size	Turnaround Time	Price
ICP-MS LOW LEVEL SENSITIVITY ANALYSIS		Call for sample size	5 - 7 BD	\$20.00/EA

Antimony	Cadmium	Thallium	Selenium	Arsenic
Lead	Uranium			

ICP-OES ANALYSIS FOR ROUTINE ELEMENTS		Call for sample size	5 - 7 BD	\$16.00/EA
--	--	----------------------	----------	-------------------

Aluminum	Cadmium	Lead	Potassium	Strontium
Antimony	Calcium	Magnesium	Selenium	Sulfur
Arsenic	Chromium	Manganese	Silicon (acid soluble)	Tin
Barium	Cobalt	Molybdenum	Silicon, Total	Titanium
Beryllium	Copper	Nickel	Silver	Vanadium
Boron	Iron	Phosphorous	Sodium	Zinc

ICP-OES ANALYSIS FOR NON-ROUTINE ELEMENTS		Call for sample size	7 - 10 BD	\$30.00/EA
--	--	----------------------	-----------	-------------------

Bismuth	Germanium	Lutetium	Rhodium	Thorium
Cerium	Gold	Neodymium	Rubidium	Thulium
Cesium	Hafnium	Niobium	Ruthenium	Tungsten
Dysprosium	Holmium	Osmium	Samarium	Uranium
Erbium	Indium	Palladium	Scandium	Ytterbium
Europium	Iridium	Platinum	Tantalum	Ytterium
Gadolinium	Lanthanum	Praseodymium	Tellurium	
Gallium	Lithium	Rhenium	Terbium	

LEAD IN PAINT OR SOIL	50g	5 - 7 BD	\$36.00
------------------------------	-----	----------	----------------

MERCURY (CVAA)	25g	5 - 7 BD	\$45.00
-----------------------	-----	----------	----------------

(Includes Sample Preparation)

NPDES PACKAGE FOR WASTEWATER	500mL	5 - 7 BD	\$97.50
-------------------------------------	-------	----------	----------------

Total Cadmium, Chromium, Copper, Lead, Nickel, Zinc (total recoverable or dissolved) (includes sample preparation)

★ PRIORITY POLLUTANT (PP) METALS

Antimony, Arsenic, Beryllium, Cadmium, Chromium, Copper, Lead, Mercury, Molybdenum, Nickel, Selenium, Silver, Thallium, Zinc (includes sample preparation)

For Soil	100g	5 - 7 BD	\$220.00
For Water	500mL	5 - 7 BD	\$200.00

	Required Sample Size	Turnaround Time	Price
QUANTITATIVE ICP-OES SCREEN (NOT FOR ASSAY PURPOSES)	Soil: 10g Water: 500mL	5 - 7 BD	\$150.00

Aluminum, Arsenic, Barium, Boron, Cadmium, Calcium, Chromium, Cobalt, Copper, Iron, Lead, Magnesium, Manganese, Molybdenum, Nickel, Phosphorus, Potassium, Selenium, Silver, Sodium, Sulfur, Zinc (includes sample preparation)

RCRA METALS:

Arsenic, Barium, Cadmium, Chromium, Lead, Mercury, Selenium, Silver

Drinking Water (includes sample preparation)	500mL	5 - 7 BD	\$160.00
Wastewater (includes sample preparation)	500mL	5 - 7 BD	\$160.00
Solids (includes sample preparation)	100g	5 - 7 BD	\$165.00

SILICON IN SOLIDS

(Includes Sample Preparation)

Silicon, Acid Soluble	50g	5 - 7 BD	\$36.00
Silicon, Fusion	10g	8 - 10 BD	\$60.00

TARGET ANALYTE LIST (TAL) METALS

Aluminum, Antimony, Arsenic, Barium, Beryllium, Cadmium, Calcium, Chromium, Cobalt, Copper, Iron, Lead, Magnesium, Manganese, Mercury, Nickel, Potassium, Selenium, Silver, Sodium, Thallium, Vanadium, Zinc(includes sample preparation)

For Soil	50g	5 - 7 BD	\$225.00
For Water	500mL	5 - 7 BD	\$235.00



ENVIRONMENTAL LANDFILL

Appendix I metals and VOC's	--	--	\$260.00
Appendix I metals only	--	--	\$200.00
Appendix I trip blank	--	--	\$125.00
Appendix I metals, VOC's & Indicator Parameters	--	--	\$400.00
Indicators Only	--	--	\$180.00
Appendix II	--	--	\$600.00



ENVIRONMENTAL MICROBIOLOGY

	Required Sample Size	Turnaround Time	Price
AEROBIC PLATE COUNT	125mL sterile	3 D	\$20.00
E. COLI & TOTAL COLIFORMS	125mL sterile	1 D	\$20.00
EU WATER TEST #1 Total Coliforms, Aerobic Plate Count 22°C and 37°C	(2) 125mL sterile	3 D	\$50.00
EU WATER TEST #2 Coliforms, Fecal Coliform, Aerobic Plate Count 22°C and 37°C, Fecal Streptococcus	(3) 125mL sterile	3 D	\$85.00
FECAL COLIFORMS *	125mL sterile	1 D	\$20.00
FECAL STREPTOCOCCUS *	125mL sterile	1 D	\$20.00
LEGIONELLA	125mL sterile	7 D	\$45.00
PSEUDOMONAS AERUGINOSA	125mL sterile	4 D	\$20.00

* Samples must be received at the laboratory within 24 hours of sampling.



ENVIRONMENTAL NPDES PERMIT PARAMETERS

	Required Sample Size	Turnaround Time	Price
EPA 503 PACKAGE	500mL	5 - 7 BD	\$215.00
Total Solids, Ammoniacal Nitrogen, Total Kjeldahl Nitrogen, Phosphorus, Potassium, Sulfur, Calcium, Magnesium, Sodium, Iron, Manganese, Copper, Zinc, pH, Nitrate Nitrogen, Arsenic, Barium, Cadmium, Chromium, Lead, Mercury, Molybdenum, Nickel, Selenium, Silver, Calculated Phosphate, Calculated Potash, Organic Nitrogen			
NPDES PACKAGE FOR WASTE WATER	500mL	5 - 7 BD	\$97.50
Total Cadmium, Chromium, Copper, Lead, Nickel, Zinc (total recoverable or dissolved) (includes sample preparation)			
PRIORITY POLLUTANT (PP) METALS	500mL	5 - 7 BD	\$200.00
Antimony, Arsenic, Beryllium, Cadmium, Chromium, Copper, Lead, Mercury, Molybdenum, Nickel, Selenium, Silver, Thallium, Zinc (includes sample preparation)			
INDIVIDUAL ANALYTES			
7 Fecal Coliform + Percent Solids (Biosolids) *	(7) 250mL	5 - 7 BD	\$280.00
Nitrogen, Ammoniacal (liquid, distillation)	500mL	5 - 7 BD	\$21.50
Biochemical Oxygen Demand (BOD)/ Carbonaceous Biochemical Oxygen Demand (CBOD) †	1L	5 - 7 BD	\$45.00
E.coli Δ	125mL	1 D	\$20.00
Fecal Coliform *	125mL	1 D	\$20.00
Hexane Extractable Materials (HEM or Oil & Grease)	1L glass	5 - 7 BD	\$75.00
Nitrogen, Total Kjeldahl (TKN)	250mL	5 - 7 BD	\$27.50
Priority Pollutant (PP) Metals	500mL	5 - 7 BD	\$200.00
Total Dissolved Solids	500mL	5 - 7 BD	\$20.00
Total Nitrogen (TKN + Nitrate/Nitrite)	500mL	5 - 7 BD	\$42.50
Total Phosphorus	500mL	5 - 7 BD	\$27.00
Total Suspended Solids	500mL	5 - 7 BD	\$20.00

* Samples must be received at the laboratory within 24 hours of sampling.

† Samples must be received at the laboratory within 48 hours of sampling.

Δ Samples must be received at the laboratory within 6 hours of sampling.



ENVIRONMENTAL ORGANICS BY GC/MS

		Required Sample Size	Turnaround Time	Price
EPA 8260 SOIL (VOC)		8oz Jar	5 - 7 BD	\$125.00
1,1,1,2-Tetrachloroethane	1,2-Dichloropropane	Bromobenzene	Dibromomethane	sec-Butylbenzene
1,1,1-Trichloroethane	1,3,5-Trimethylbenzene	Bromochloromethane	Dichlorodifluoromethane	Styrene
1,1,2,2-Tetrachloroethane	1,3-Dichlorobenzene	Bromodichloromethane	Ethyl Ether	tert-Butylbenzene
1,1,2-Trichloro-1,1,2-trifluoroethane	1,3-Dichloropropane	Bromoform	Ethyl Methacrylate	Tetrachloroethene
1,1,2-Trichloroethane	1,4-Dichlorobenzene	Bromomethane	Ethylbenzene	Toluene
1,1-Dichloroethane	2,2-Dichloropropane	Carbon disulfide	Hexachlorobutadiene	Total Xylenes
1,1-Dichloroethene	2-Butanone	Carbon Tetrachloride	Iodomethane	trans-1,2-Dichloroethene
1,1-Dichloropropene	2-Chloroethyl vinyl ether	Chlorobenzene	Isopropylbenzene	trans-1,3-Dichloropropene
1,2,3-Trichlorobenzene	2-Chlorotoluene	Chloroethane	m,p-Xylenes	trans-1,4-Dichloro-2-butene
1,2,3-Trichloropropane	2-Hexanone	Chloroform	Methyl tert-Butyl Ether	Trichloroethene
1,2,4-Trichlorobenzene	4-Chlorotoluene	Chloromethane	Methylene Chloride	Trichlorofluoromethane
1,2,4-Trimethylbenzene	4-Methyl-2-pentanone	Chloroprene	Naphthalene	Vinyl acetate
1,2-Dibromo-3-Chloropropane	Acetone	cis-1,2-Dichloroethene	n-Butyl Benzene	Vinyl chloride
1,2-Dibromoethane	Acrolein	cis-1,3-Dichloropropene	n-Propyl Benzene	
1,2-Dichlorobenzene	Acrylonitrile	cis-1,4-Dichloro-2-butene	o-Xylene	
1,2-Dichloroethane	Benzene	Dibromochloromethane	p-Isopropyltoluene	
EPA 8260 WATER (VOC)		(4) 40mL Vials	5 - 7 BD	\$125.00
1,1,1,2-Tetrachloroethane	1,3,5-Trimethylbenzene	Bromochloromethane	Dichlorodifluoromethane	p-Isopropyltoluene
1,1,1-Trichloroethane	1,3-Dichlorobenzene	Bromodichloromethane	Ethyl Ether	sec-Butylbenzene
1,1,2,2-Tetrachloroethane	1,3-Dichloropropane	Bromoform	Ethyl Methacrylate	Styrene
1,1,2-Trichloro-1,1,2-trifluoroethane	1,4-Dichlorobenzene	Bromomethane	Ethylbenzene	tert-Butylbenzene
1,1,2-Trichloroethane	2,2-Dichloropropane	Carbon disulfide	Hexachlorobutadiene	Tetrachloroethene
1,1-Dichloroethane	2-Butanone	Carbon Tetrachloride	Iodomethane	Tetrahydrofuran
1,1-Dichloroethene	2-Chlorotoluene	Chlorobenzene	Isopropylbenzene	Toluene
1,1-Dichloropropene	2-Hexanone	Chloroethane	m,p-Xylenes	Total Trihalomethanes
1,2,3-Trichlorobenzene	4-Chlorotoluene	Chloroform	Methyl Acrylate	Total Xylenes
1,2,3-Trichloropropane	4-Methyl-2-pentanone	Chloromethane	Methyl Methacrylate	trans-1,2-Dichloroethene
1,2,4-Trichlorobenzene	Acetone	Chloroprene	Methyl tert-Butyl Ether	trans-1,3-Dichloropropene
1,2,4-Trimethylbenzene	Acrolein	cis-1,2-Dichloroethene	Methylene Chloride	trans-1,4-Dichloro-2-butene
1,2-Dibromo-3-Chloropropane	Acrylonitrile	cis-1,3-Dichloropropene	Naphthalene	Trichloroethene
1,2-Dibromoethane	Allyl Chloride	cis-1,4-Dichloro-2-butene	n-Butyl Benzene	Trichlorofluoromethane
1,2-Dichlorobenzene	Benzene	Dibromochloromethane	n-Propyl Benzene	Vinyl acetate
1,2-Dichloroethane	Bromobenzene	Dibromomethane	o-Xylene	Vinyl chloride
1,2-Dichloropropane				

		Required Sample Size	Turnaround Time	Price
EPA 624 (VOLATILES) TTO (TOTAL TOXIC ORGANICS)		(4) 40mL Vials	5 - 7 BD	\$125.00
1,1,1-Trichloroethane	1,2-Dichloropropane	Bromodichloromethane	Chloromethane	Toluene
1,1,2,2-Tetrachloroethane	1,3-Dichlorobenzene	Bromoform	cis-1,3-Dichloropropene	trans-1,2-Dichloroethene
1,1,2-Trichloroethane	1,4-Dichlorobenzene	Bromomethane	Dibromochloromethane	trans-1,3-Dichloropropene
1,1-Dichloroethane	2-Chloroethyl vinyl ether	Carbon Tetrachloride	Ethylbenzene	Trichloroethene
1,1-Dichloroethene	Acrolein	Chlorobenzene	Methylene Chloride	Trichlorofluoromethane
1,2-Dichlorobenzene	Acrylonitrile	Chloroethane	Naphthalene	Vinyl chloride
1,2-Dichloroethane	Benzene	Chloroform	Tetrachloroethene	
EPA 625 (SEMIVOLATILES) TTO (TOTAL TOXIC ORGANICS)		3L	7 - 10 BD	\$240.00
1,2,4-Trichlorobenzene	2-Chloronaphthalene	Azobenzene	Chrysene	Indeno(1,2,3-cd)pyrene
1,2-Dichlorobenzene	2-Chlorophenol	Benidine	Dibenzo(a,h)anthracene	Isophorone
1,2-Diphenylhydrazine	2-Nitrophenol	Benzo(a)anthracene	Diethyl phthalate	Naphthalene
1,3-Dichlorobenzene	3,3'-Dichlorobenzidine	Benzo(a)pyrene	Dimethylphthalate	Nitrobenzene
1,4-Dichlorobenzene	4,6-Dinitro-2-methylphenol	Benzo(b)fluoranthene	Di-n-butyl phthalate	N-Nitrosodimethylamine
2,4,5-Trichlorophenol	4-Bromophenyl-phenylether	Benzo(ghi)perylene	Di-n-octyl phthalate	N-Nitroso-di-n-propylamine
2,4,6-Trichlorophenol	4-Chloro-3-methylphenol	Benzo(k)fluoranthene	Fluoranthene	N-Nitrosodiphenylamine
2,4-Dichlorophenol	4-Chlorophenyl-phenylether	bis(2-chloroethoxy) methane	Fluorene	Pentachlorophenol
2,4-Dimethylphenol	4-Nitrophenol	bis(2-chloroethyl)ether	Hexachlorobenzene	Phenanthrene
2,4-Dinitrophenol	Acenaphthene	2,2'-Oxybis(1-chloropropane)	Hexachlorobutadiene	Phenol
2,4-Dinitrotoluene	Acenaphthylene	bis(2-ethylhexyl)phthalate	Hexachlorocyclopentadiene	Pyrene
2,6-Dinitrotoluene	Anthracene	Butylbenzylphthalate	Hexachloroethane	
EPA 8270 (SEMIVOLATILES)		Soils: 8oz Jar Water: 3l	7 - 10 BD	\$240.00
1,2,4-Trichlorobenzene	2-Methylnaphthalene	Acenaphthene	Butylbenzylphthalate	Hexachloroethane
1,2-Dichlorobenzene	2-Methylphenol	Acenaphthylene	Carbazole	Indeno(1,2,3-cd)pyrene
1,2-Diphenylhydrazine	2-Nitroaniline	Anthracene	Chrysene	Isophorone
1,3-Dichlorobenzene	2-Nitrophenol	Azobenzene	Dibenzo(a,h)anthracene	Naphthalene
1,4-Dichlorobenzene	3,3'-Dichlorobenzidine	Benidine	Dibenzofuran	Nitrobenzene
2,4,5-Trichlorophenol	3-Nitroaniline	Benzo(a)anthracene	Diethyl phthalate	N-Nitrosodimethylamine
2,4,6-Trichlorophenol	4,6-Dinitro-2-methylphenol	Benzo(a)pyrene	Dimethylphthalate	N-Nitroso-di-n-propylamine
2,4-Dichlorophenol	4-Bromophenyl-phenylether	Benzo(b)fluoranthene	Di-n-butyl phthalate	N-Nitrosodiphenylamine
2,4-Dimethylphenol	4-Chloro-3-methylphenol	Benzo(ghi)perylene	Di-n-octyl phthalate	Pentachlorophenol
2,4-Dinitrophenol	4-Chloroaniline	Benzo(k)fluoranthene	Fluoranthene	Phenanthrene
2,4-Dinitrotoluene	4-Chlorophenyl-phenylether	bis(2-chloroethoxy) methane	Fluorene	Phenol
2,6-Dinitrotoluene	4-Methylphenol	bis(2-chloroethyl)ether	Hexachlorobenzene	Pyrene
2-Chloronaphthalene	4-Nitroaniline	2,2'-Oxybis(1-chloropropane)	Hexachlorobutadiene	Total Cresol
2-Chlorophenol	4-Nitrophenol	bis(2-ethylhexyl)phthalate	Hexachlorocyclopentadiene	
GLYCOL DETERMINATION		100mL	5 - 7 BD	\$120.00
Diethylene glycol, Ethylene glycol, Propylene glycol				



ENVIRONMENTAL PESTICIDES BY GAS CHROMATOGRAPHY

	Required Sample Size	Turnaround Time	Price
NEUTRAL EXTRACTABLES (MDA-NEP)	Soil: 8oz Jar Water: 3L	5 - 7 BD	\$150.00

Acetochlor (Harness)	Butylate (Sutan)	Ethalfuralin (Sonolan)	Pendimethalin (Prowl)	Terbufos (Counter)
Alachlor (Lasso)	Chlorpyrifos (Dursban, Lorsban)	Fonofos (Dyfonate)	Phorate (Thimet)	Triallate (Far-go)
Ametryn (Evik)	Cyanazine (Bladex)	Hexazinone (Velpar)	Prometon (Pramitol)	Trifluralin (Treflan)
Atrazine (Aatrex)	Deethylatrazine	Isophenphos (Oftanol)	Prometryn(Caparyl)	
Benfluralin (Balan)	Deisopropylatrazine	Metolachlor (Dual)	Propachlor (Ramrod)	
Bromacil (Hyvar)	Dimethenamid (Frontier)	Metribuzin(Sencor)	Propazine (Milogard)	
Butachlor (Machete)	EPTC (Eptam, Eradicane)	Oxadiazon (Ronstar)	Simazine (Princep)	

EPA 608	(3) 3L	5 - 7 BD	\$200.00
----------------	--------	----------	-----------------

4,4'-DDE	Aroclor 1016	Aroclor 1260	Endosulfan I	gamma-BHC (Lindane)
4,4'-DDD	Aroclor 1221	Aroclor 1262	Endosulfan II	gamma-Chlordane
4,4'-DDT	Aroclor 1232	Aroclor 1268	Endrin	Heptachlor
4,4'-Methoxychlor	Aroclor 1242	beta - BHC	Endrin aldehyde	Heptachlor epoxide
Aldrin	Aroclor 1248	delta - BHC	Endrin ketone	Technical Chlordane
alpha - BHC	Aroclor 1254	Dieldrin	Endosulfan sulfate	Toxaphene
alpha-Chlordane				

EPA 8081A / 8082 (ORGANOCHLORINE PESTICIDES)	Soil: 8oz Jar Water: 3L	7 - 10 BD	\$200.00
---	----------------------------	-----------	-----------------

4,4'-DDD	Aroclor 1016	Aroclor 1260	Endosulfan I	gamma-BHC (Lindane)
4,4'-DDE	Aroclor 1221	Aroclor 1262	Endosulfan II	gamma-Chlordane
4,4'-DDT	Aroclor 1232	Aroclor 1268	Endosulfan sulfate	Heptachlor
Aldrin	Aroclor 1242	beta - BHC	Endrin	Heptachlor epoxide
alpha - BHC	Aroclor 1248	delta - BHC	Endrin aldehyde	Methoxychlor
alpha-Chlordane	Aroclor 1254	Dieldrin	Endrin ketone	Toxaphene

EPA 8141 (ORGANOPHOSPHOROUS PESTICIDES)	Soil: 8oz Jar Water: 3L	5 - 7 BD	\$150.00
--	----------------------------	----------	-----------------

Azinphos Methyl	Diazinon	Fensulfiothion	Naled	TEPP
Bolstar	Dichlorvos	Fenthion	Parathion	Tokuthion
Chlorpyrifos	Dimethoate	Malathion	Phorate	Trichloronate
Coumaphos	Disulfoton	Merphos	Ronnel	
Demeton-O	Ethoprop	Methyl Parathion	Sulfotep	
Demeton-S	EPN	Mevinphos	Tetrachlorovinphos	

		Required Sample Size	Turnaround Time	Price
EPA 8082 (PCB'S)				
Oil (VOA Vial)		40ml VOA Vials	7 - 10 BD	\$125.00
Soil		8oz Jar	7 - 10 BD	\$170.00
Water		3L	7 - 10 BD	\$170.00
Wipe		contact for supplies	7 - 10 BD	\$170.00
Aroclor 1016	Aroclor 1248	Aroclor 1221	Aroclor 1254	Aroclor 1268
Aroclor 1232	Aroclor 1260	Aroclor 1242	Aroclor 1262	

GLYPHOSATE IN WATER ONLY

3L

7 - 10 BD

\$275.00



ENVIRONMENTAL PETROLEUM CONTAMINATION

FUEL FINGERPRINT

150mL

5 - 7 BD

\$90.00

OIL PACKAGES

New Oil - BTU, Specific Gravity, Sulfur, Moisture

250mL

5 - 7 BD

\$175.00

Used Oil - Total Halogens, Arsenic, Cadmium, Chromium, Flash Point, Lead

500mL

5 - 7 BD

\$250.00

SULFUR TOTAL IN FUEL (ASTM D5453)

25g

5 - 7 BD

\$60.00

UNDERGROUND STORAGE TANKS & SURFACE SPILLS

OA-1 (BTEX, Hexane, MTBE, Naphthalene, and TPH for gasoline)

Water: (4) 40mL Vials
Soil: 8oz. Jar

5 - 7 BD

\$75.00
\$75.00

OA-2 (as gasoline, diesel, Kerosene, Mineral Spirits, waste oil)

Water: (3) 1L Bottles
Soil: 8oz. Jar

5 - 7 BD

\$85.00
\$85.00

Diesel-range Organics (DRO)

(3) 1L Bottles

5 - 7 BD

\$110.00

WASTE OIL/PETROLEUM

BTUs

100g

2 -3 BD

\$45.00

Flash Point, Liquid Samples
(Closed Cup, 4° - 300°C)

1 - 2 cups

5 - 7 BD

\$90.00

Polychlorinated Biphenyls in oil (PCB's)

40ml VOA Vials

7 - 10 BD

\$125.00

Sulfur

25g

5 - 7 BD

\$60.00

Total Halogens (as Chlorine)

100g

5 - 7 BD

\$110.00



ENVIRONMENTAL SOIL CORROSIVE TO PIPES

	Required Sample Size	Turnaround Time	Price
Redox Potential, Conductivity, Resistivity, pH, Chloride, Sulfate, Sulfide Screen, Percent Solids	2 - 4 cups	5 - 7 BD	\$110.00



ENVIRONMENTAL SUSPECTED HAZARDOUS & SOLID WASTE

CORROSIVITY

pH Determination (aqueous)	125mL	3 - 5 BD	\$10.00
Solid Samples	25g	3 - 5 BD	\$12.00

IGNITABILITY

Flash Point, Liquid Samples (Closed Cup, 4° - 300°C)	1-2 cups	5 - 7 BD	\$90.00
Flash Point, Solid Samples (Open Cup, 4° - 200°C)	1-2 cups	5 - 7 BD	\$90.00

PAINT FILTER TEST

20g	5 - 7 BD	\$25.00
-----	----------	----------------

REACTIVITY

Releasable Cyanide	--	5 - 7 BD	\$55.00
Releasable Sulfide	--	8 - 10 BD	\$55.00
Tested for violent reaction with Water	--	5 - 7 BD	\$20.00
Tested for violent reaction with Base	--	5 - 7 BD	\$20.00
Tested for violent reaction with Acid	--	5 - 7 BD	\$20.00

TCLP INORGANICS*

400g	7 - 10 BD	\$240.00
------	-----------	-----------------

Arsenic	Chromium	Lead	Selenium	Silver
Barium	Cadmium	Mercury		

TCLP VOLATILES†

200g	6 - 8 BD	\$300.00
------	----------	-----------------

1,1 Dichloroethene	1,4-Dichlorobenzene	Carbon Tetrachloride	Chlorobenzene	Tetrachloroethylene
1,2-Dichloroethane	Benzene	Chloroform	Methyl-Ethyl Ketone (2-butanone)	Vinyl Chloride
		Trichloroethylene		

TCLP SEMI VOLATILES†

200g	7 - 10 BD	\$325.00
------	-----------	-----------------

1,4-Dichlorobenzene	2,4,6-Trichlorophenol	Hexachlorobutadiene	Nitrobenzene	Pyridine
2,4-Dinitrotoluene	Hexachlorobenzene	Hexachloroethane	Pentachlorophenol	Total Cresol
2,4,5-Trichlorophenol				

* Toxic Characteristics Leaching Procedure (TCLP) price include extraction and analysis of "waste" and extraction of sample per TCLP QC requirements.

† Prices include extraction and analysis of "solid waste" only and extraction of sample per TCLP QC requirements.



ENVIRONMENTAL HOME OWNERS & SMALL BUSINESSES

	Required Sample Size	Turnaround Time	Price
★ W1 - LIVESTOCK SUITABILITY	(2) 250mL	5 - 7 BD	\$50.00
Sodium, Conductivity, Iron, Calcium, Sulfate, Copper, Magnesium, Nitrate Nitrogen, Total Dissolved Solids (by calculation), Chloride, pH			
★ W2 - IRRIGATION SUITABILITY	(2) 250mL	5 - 7 BD	\$65.00
Sodium, Chloride, Phosphorus, Calcium, Conductivity, Potassium, Magnesium, Sulfate, Boron, Iron, Nitrate Nitrogen, SAR, Copper, pH, Total Dissolved Solids (by calculation), Manganese, Carbonate, Zinc, Bicarbonate			
★ W3 - WATER QUALITY*	(2) 250mL & 125mL sterile	5 - 7 BD	\$70.00
Total Coliform, Total Hardness, Manganese, E.coli, Conductivity, Sulfate, Sodium, Iron, Chloride, Calcium, Total Dissolved Solids (by calculation), Fluoride, Magnesium, pH, Nitrate Nitrogen			
★ W3A	(2) 250mL	5 - 7 BD	\$62.00
Total Hardness, Manganese, Conductivity, Sulfate, Sodium, Iron, Chloride, Calcium, Total Dissolved Solids (by calculation), Fluoride, Magnesium, pH, Nitrate Nitrogen			
W4*	250mL plastic & 125mL sterile	3 - 5 BD	\$35.00
Total Coliform, E. coli, Nitrate/Nitrite Nitrogen (EPA 353.2)			
★ W5 - FHA LOAN*	250mL plastic, 1L plastic, & (2) 125mL sterile	5 - 7 BD	\$95.00
Total Coliform, Nitrate Nitrogen, Lead, Fecal Coliform, Nitrite Nitrogen, E. Coli			
ADDITIONAL PACKAGES			
Lead & Copper in drinking water	1L	5 - 7 BD	\$50.00
Fluoride in unknown water source	125mL plastic	5 - 7 BD	\$20.00
Total Coliform (Quanti tray 18 hour)*	125mL sterile	1 D	\$20.00
Trihalomethanes (THMs) in drinking water (EPA 524.2)	(4) 40mL vials	5 - 7 BD	\$125.00
pH ADJUSTMENT	250mL	5 - 7 BD	\$40.00
Type and volume of acid required to adjust pH to a designated pH			
POOL MONITORING*	125mL sterile	1 D	\$20.00
Total Coliform (Quantitray 18 hour)			
SPA MONITORING*			
Pseudomonas Aeruginosa	125mL sterile	1 D	\$20.00
Total Coliform (Quantitray 18 hour)	125mL sterile	1 D	\$20.00

* Samples must be received at the laboratory within 24 hours of sampling.

This image shows a single sheet of white paper with horizontal ruling lines. The lines are evenly spaced and run across the width of the page. There are no margins, text, or other markings on the paper.

TERMS OF USE

PLEASE READ THESE TERMS OF USE CAREFULLY. BY ACCESSING OR USING THIS WEB SITE, YOU AGREE TO BE BOUND BY THE TERMS AND CONDITIONS DESCRIBED HEREIN AND ALL TERMS INCORPORATED BY REFERENCE. IF YOU DO NOT AGREE TO ALL OF THESE TERMS, DO NOT PROCEED WITH TESTING.

We reserve the right to change or modify any of the terms and conditions contained in the Terms or any policy or guideline of the Sites, at any time and in our sole discretion. Any changes or modification will be effective immediately upon posting of the revisions on the Sites, and you waive any right you may have to receive specific notice of such changes or modifications.

Analysis Services Agreement

MIDWEST LABORATORIES, INC. STANDARD TERMS AND CONDITIONS

- 1. EFFECT OF TERMS.** All Customers who place an order with Midwest Laboratories, Inc. along with its affiliates, agents, related entities, subsidiaries, officers, shareholders, employers, and assigns ("MIDWEST") are subject to the following Terms and Conditions.
- 2. CONFIDENTIALITY.** Reports and/or other information as requested are provided only to the Customer or those designated by the Customer unless otherwise required by law. Customer and/or its designees agrees not to use report or data in any manner that may harm or has the potential to harm the reputation or business of MIDWEST. Customer may not publish the name of MIDWEST without written approval.
- 3. TEST AND CONTROL ARTICLE CHARACTERIZATION.** If submitted by Customer, the Customer is fully responsible for all test/control article characterizations, and the Customer agrees that MIDWEST is fully relying on the Customer for such test/control characterizations. This includes, but is not limited to, identity, strength, purity, composition and stability. Further, the Customer as a sponsor shall be responsible for the methods of synthesis, fabrication, or derivation of the sample. MIDWEST makes no representations or warranties of any kind (express or implied) about the representative nature of the test/control article submitted by the Customer.
- 4. DELIVERY OF SAMPLES.** Customer is responsible for samples until they are received by MIDWEST personnel. MIDWEST is not responsible for samples that are rejected because of holding time or improper preservation or storage before samples are received by MIDWEST personnel.
- 5. ACCEPTANCE OF SAMPLES.** If MIDWEST determines that the sample will not yield valid data for any reason (including but not limited to sample preservation, improper sample containers, or samples that require modification of the normal procedures) samples will not be accepted and MIDWEST will notify Customer of such determination. If modification of the procedures is possible, fees for the modification will be determined. If Customer agrees to the fees verbally or in writing the samples will be accepted and processed for the agreed upon fees.

6. **STANDARD SERVICES.** Analyses within stated turnaround times (calculated in business days, excluding weekends and holidays), if MIDWEST has stated in writing a turnaround time, otherwise, as is reasonable in the industry. Rush analysis, weekend and holiday service is available but may incur additional costs. It is Customer's responsibility to inquire of such charges prior to submission of samples for analysis.
 7. **RUSH ANALYSIS.** Rush Turnaround Times (TAT) are available upon request and must be approved by an MIDWEST team member prior to sample submission. MIDWEST is not liable for extensions of TATs as a result of highly-contaminated samples. Turnaround times may be extended as a result of improper sampling, preservation, sample matrix, wide ranges of analyte concentration or other issues outside of MIDWEST's control.
 8. **ACCEPTANCE OF TEST REPORTS.** All reports and letters issued by MIDWEST are for the exclusive use of the Customer to whom they are addressed. No other entity or person may rely upon or use such letter or report without the written consent of MIDWEST. MIDWEST reports apply only to the specific samples tested under stated test conditions and protocols and test results are not necessarily indicative of the qualities of apparent identical or similar testing or conditions. MIDWEST shall have no liability for any deductions, inferences or generalizations drawn by the Customer or others from MIDWEST's reports. If the Customer requests verification of any part of the test report, MIDWEST shall be notified within thirty (30) days of submission of the report to the Customer. Failure to notify within this thirty (30) day period acknowledges acceptance of the report. Should additional work be required for verification purposes, MIDWEST shall be entitled to the reasonable value of the additional work performed by MIDWEST. Payment for any test report or other MIDWEST invoice shall not be conditioned upon acceptance and/or approval of a third party or the results of the test.
 9. **HAZARDOUS WASTES.** Customer must notify MIDWEST of any materials suspected of being hazardous and provide the appropriate documentation and packaging of such samples. MIDWEST reserves the right to refuse samples that may cause a hazard to which MIDWEST is not equipped to handle and will return samples to the Customer. It is the responsibility of Customer to label and meet all regulations on samples that are hazardous. Hazardous samples may be returned to Customer or Fees may be applied to have hazardous material properly and safely disposed of by a third party.
 10. **QUALITY ASSURANCE.** MIDWEST agrees to follow their Quality Assurance Manual and Method SOPs unless specified in writing. It is up to Customer to determine if these procedures meet their needs prior to placing the order.
 11. **RETENTION OF SAMPLES.** Unless otherwise specified water samples are stored for a minimum of 14 days after completion of the work order. Empty containers and samples that are analyzed for microbiology are disposed of immediately. MIDWEST may have the capacity to store samples for longer periods of time for further or additional analysis, if requested prior to sample disposal. Additional fees may be applied.
 12. **CANCELLATION POLICY.** All orders cancelled may be subject to a cancellation fee. If sample(s) are processed for analysis before cancellation has been requested, cost of prep completed and/or full analysis cost will be charged.
 13. **REPORTS.** Reports will be kept for 3 years unless otherwise required by law or specified in writing.
-

- 14. VALID ORDERS.** It is the sole responsibility of the Customer to determine that services ordered are suitable for the purposes of the Customer's intended use. Any order provided to MIDWEST, notwithstanding the fact that such order may have been given or signed by a person not authorized by the Customer, shall be deemed to constitute a valid order.
- 15. PAYMENT TERMS.**
- MIDWEST reserves the right to request an initial retainer fee before MIDWEST begins work on the matter. Any retainer will be deposited and credited to Customer's account and will be applied toward all invoiced fees and costs incurred in this matter. MIDWEST will bill against the retainer as fees are expended. Should MIDWEST anticipate at any time that costs will exceed the amount in retainer, it MAY request pre-payment in MIDWEST's sole discretion. Upon termination of this Agreement, and the payment of any sums due and owing to MIDWEST, any excess will be refunded to Customer.
 - To the extent that any invoice exceeds the amount of the retainer held on credit, and such costs are invoiced, Customer agrees to pay the invoices within 15 days of the date on the invoice, unless otherwise designated in writing by MIDWEST.
 - Invoice Disputes. Customer shall notify MIDWEST in writing of any dispute with any invoice (along with substantiating documentation and a reasonably detailed description of the dispute) within 15 days from the date of such invoice. Customer will be deemed to have accepted all invoices for which MIDWEST does not receive timely notification of dispute and shall pay all undisputed amounts due under such invoices within 15 days.
 - The Customer's obligation to pay MIDWEST is not in any way conditioned upon Customer receiving payment from any third party or on any specific result from MIDWEST's services. If the Customer fails to make payment according to the agreed upon terms, MIDWEST shall have the full right to cease all work, withhold test data and or reports, and cause all invoices to be immediately due and payable, even if such ceasing would compromise the Customer's study and require the Customer to prepare and submit new samples. Customer is still obligated to pay for the testing up to the date testing is ceased by MIDWEST.
 - In the event the Customer defaults in making payment of any amount that has become due and owing, the full outstanding balance (whether due or not) will immediately become due and payable without further notice to the Customer.
 - Past Due accounts will be charged 1.5% per month of the unpaid balance. Customer agrees to reimburse MIDWEST for the costs of collection of past due debts including but not limited to collection and legal fees, to the fullest extent permissible by applicable law. Customer may not defer billing to a third party. MIDWEST will not be responsible for holding times or deadlines that are missed because of changes or delays in payment. Payments are accepted by check, ACH or credit card. Credit card payments incur a 3% fee if payment is made after the date of the invoice. Returned checks are charged \$25 fee

- 16. WARRANTIES.** Services performed by MIDWEST, including its works and reports are not governed by the Uniform Commercial Code (UCC). Except as stated expressly herein, MIDWEST disclaims all warranties, express or implied, including any warranties of merchantability or fitness for a particular purpose. MIDWEST shall have no liability for incidental or consequential damages of any nature whatsoever. The Customer acknowledges and agrees that MIDWEST provides no warranty, express or implied regarding any supplies, devices, or monitoring.
- 17. CUSTOMER REMEDIES.** MIDWEST warrants the accuracy of the results of samples as submitted, no other warranty or liability for the use of the result is expressed or implied. Expressly, MIDWEST will provide services in accordance with this Agreement and MIDWEST will not have any responsibility other than to exercise reasonable skill and care in the performance of services. In the event any court of competent jurisdiction or arbitrator makes a final determination that MIDWEST has failed to comply with such standards of conduct in providing services and that such failure directly caused the Customer harm, MIDWEST will be responsible to compensate the Customer for such direct harm, PROVIDED, HOWEVER, that the amount of such compensation will not exceed the cost of services provided that caused the Customer harm or the damages incurred, whichever is less, and that, under no circumstances will MIDWEST be liable to the Customer for any incidental, indirect, consequential, or punitive damages. EXCEPT AS OTHERWISE PROVIDED EXPRESSLY HEREIN, MIDWEST MAKES NO OTHER REPRESENTATION OR WARRANTY OF ANY KIND, WHETHER EXPRESS OR IMPLIED, WITH RESPECT TO THE SERVICES PROVIDED OR GOODS SOLD, INCLUDING, BUT NOT LIMITED TO, ANY "IMPLIED WARRANTY OF MERCHANTABILITY" OR "FITNESS FOR A PARTICULAR PURPOSE."
- 18. LITIGATION.** MIDWEST and Customer waive the right to a trial by jury.
- 19. INDEMNIFICATION.** Customer agrees to indemnify MIDWEST for gross negligence or misconduct on the part of Customer or its agents unless such gross negligence is a result of negligent or willful omissions on the part of MIDWEST.
- 20. THIRD PARTY CLAIMS.** CUSTOMER AGREES TO INDEMNIFY AND HOLD HARMLESS MIDWEST AND ITS DIRECTORS, OFFICERS, EMPLOYEES, AFFILIATES, AGENTS, AND SUBCONTRACTORS (EACH AN "INDEMNIFIED PARTY") FROM ALL LOSSES AND EXPENSES (INCLUDING REASONABLE ATTORNEYS' FEES) ARISING OUT OF, OR RELATED TO, CLAIMS ASSERTED BY THIRD PARTIES THAT RELATE TO THE TESTING RESULTS OR TESTING DATA PROVIDED BY MIDWEST TO CUSTOMER, OR THE MANUFACTURE, MARKETING, OR SALE OF CUSTOMER'S PRODUCTS OR THAT RELATE TO THE SERVICES RENDERED.
- 21. RELEASE AND WAIVER.** TO THE EXTENT PERMITTED BY LAW, CUSTOMER WAIVES AND RELEASES MIDWEST AND ITS DIRECTORS, OFFICERS, EMPLOYEES, AFFILIATES, AGENTS AND SUBCONTRACTORS FROM ALL LIABILITY, CLAIMS, DEMANDS, ACTIONS, OR CAUSES OF ACTION FOR ANY ALLEGED LOSS, DAMAGE, OR INJURY, OTHER THAN A CLAIM FOR COMPENSATION FROM MIDWEST PURSUANT TO SECTION 8. THIS RELEASE AND WAIVER COVERS ALL CLAIMS ARISING IN TORT AS WELL AS THOSE ARISING UNDER ANY STATE OR FEDERAL STATUTE, THAT IN ANY WAY ARISE OUT OF, OR RELATE TO, THE SERVICES OR PERFORMANCE OR ALLEGED NON-PERFORMANCE UNDER ANY AGREEMENT BETWEEN THE PARTIES.
-

- 22. RECOVERY OF LEGAL/COLLECTION COSTS.** Should MIDWEST instruct its attorneys or collection agent to collect any overdue amounts, or to take any action against the Customer in the implementation or protection of MIDWEST's rights, MIDWEST shall be entitled to the recovery of all legal fees, costs and/or collection costs arising therefrom, to the fullest extent permissible by law.
- 23. GOVERNING LAW AND CONSENT TO JURISDICTION.** The Customer hereby agrees that this Agreement and all other agreements between MIDWEST and the Customer shall be deemed to be made and governed by the Laws of the State of Nebraska. The Customer hereby consents that any legal action brought by MIDWEST for collection of any fees or invoices not paid by the Customer or other remedies sought by MIDWEST, shall be brought in a court of competent jurisdiction in Douglas County, Nebraska, or if the action is to be in federal court, in the U.S. District Court for the District of Nebraska.
- **COPYRIGHT.** The Customer acknowledges and agrees that all testing protocols or processes used to generate test results are the sole ownership of MIDWEST. No rights or ownership of MIDWEST's copyrights or other intellectual property of MIDWEST is transferred by invoicing the Customer for protocols used in the performance of the service by MIDWEST. Customer agrees that it shall not infringe upon any of the intellectual property rights of MIDWEST. Nothing in this Agreement shall be construed as a sale or transfer of MIDWEST's copyrights, trademarks or any other intellectual property owned or held by MIDWEST. Until such time as the Customer has paid MIDWEST in full with respect to any services provided by MIDWEST, the license to use any test results or any data related thereto shall be prohibited and shall remain the property of MIDWEST. MIDWEST shall, in its sole discretion, without notice to the Customer, be entitled to take possession of any such reports which have not been paid for or for which payment is overdue. Customer shall not be entitled to a credit with respect to services that may have been partially paid for.
 - **MISCELLANEOUS.** The failure of a party to insist upon strict performance of any provision of this Agreement or to exercise any right arising out of this Agreement shall neither impair that provision or right nor constitute a waiver of that provision or right, in whole or in part, in that instance or in any other instance. Any waiver by a party of a particular provision or right shall be in writing, shall be as to a particular matter and, if applicable, for a particular period of time and shall be signed by such party. If any provision of this Agreement or the application thereof is held invalid, the invalidity shall not affect other provisions or applications of the Agreement which can be given effect without the invalid provisions or applications and to this end the provisions of this Agreement are declared to be severable.

[illegible]





13611 B STREET | OMAHA, NE 68144
402.334.7770 | MIDWESTLABS.COM